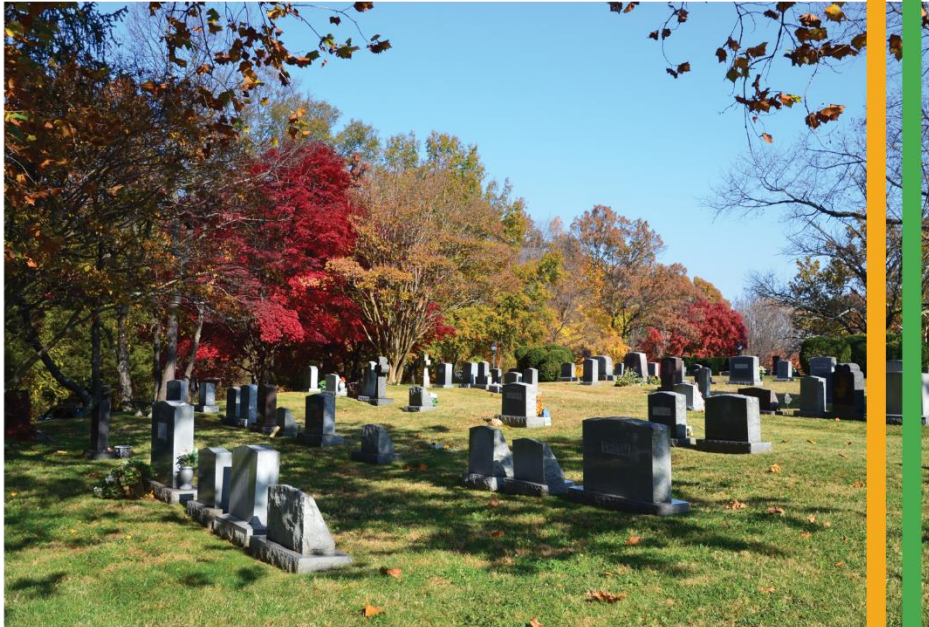


# The Cemetery



*The Cemetery at  
Walker Chapel Historic Cemetery*

2024 ~ 2025

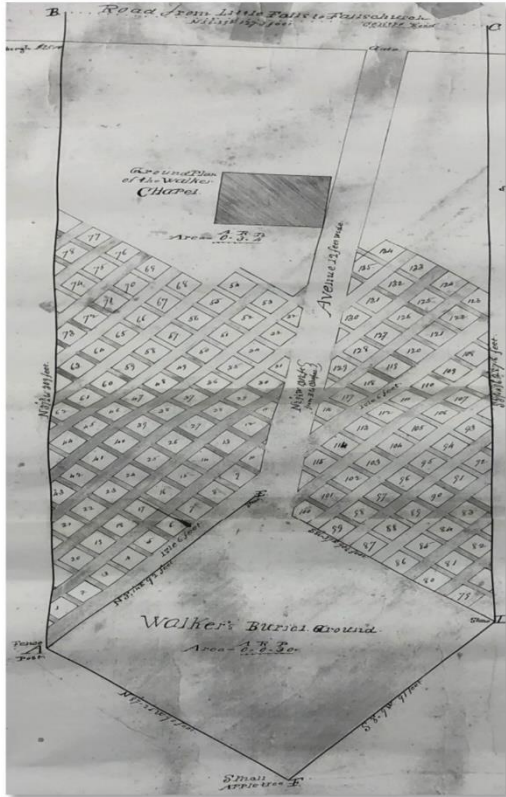
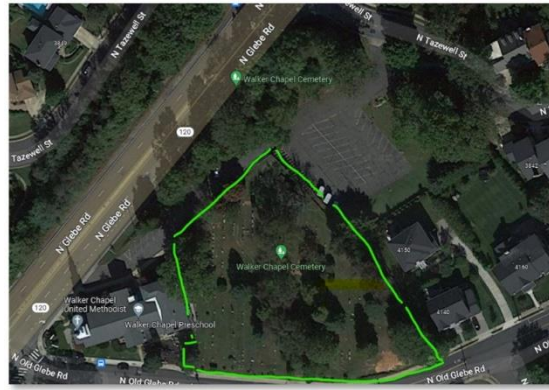
Walker Chapel UMC  
4102 N. Glebe Road  
Arlington, VA 22207  
703-538-5200  
[www.walkerchapel.org](http://www.walkerchapel.org)  
[www.chapelcemetery.org](http://www.chapelcemetery.org)

# Introduction

Welcome to

## *Walker Chapel Historic Cemetery*

a sacred space nestled within the serene embrace of Arlington County. Steeped in history and tradition, our cemetery offers a tranquil final resting place for cherished memories to endure through generations.



Seen from above, the Walker Chapel Historic Cemetery is located within the green outline. The approximate location of the original Walker family Burial Ground is in the lower right corner of the Cemetery.

Established in the 1800s, Walker Chapel Historic Cemetery traces its roots back to the founding families of Walker Chapel. What began as humble gatherings in homes evolved into a steadfast beacon of faith and community. The entire grounds, spanning 92,400 square feet, hold significance and are designated as an Arlington Historical District.

At Walker Chapel, we honor the legacy of those who came before us. The earliest recorded burial dates to 1848, marking the beginning of a sacred journey that continues to this day. As stewards of this sacred ground, the Walker Chapel Board of Trustees ensures that every aspect of our cemetery reflects the reverence and respect befitting of its heritage.

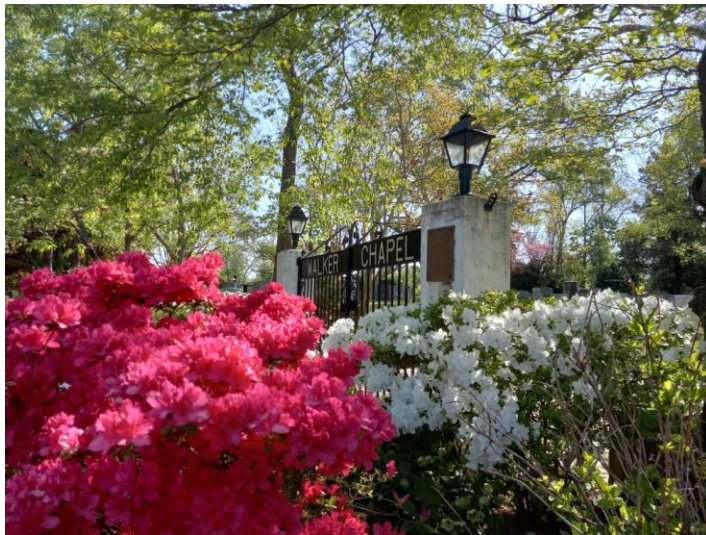
Rooted in the principles of the United Methodist Church, Walker Chapel Historic Cemetery operates with integrity and compassion. Our policies and procedures uphold the sanctity of burial grounds, providing solace and support to families during their time of need. We adhere to the Methodist *Book of Discipline*, and embrace the spirit of community, welcoming all who seek solace within our hallowed grounds.

At Walker Chapel Historic Cemetery, we offer a range of services tailored to meet the diverse needs of our community. This *Guide* explains in detail for the Columbaria those services and the policies, procedures, and guidelines that define us. For more information about our services, and pricing, or to schedule a visit, please visit our website at [www.chapelcemetery.org](http://www.chapelcemetery.org). Our dedicated staff and volunteers are ready to assist you in person, over the phone, via email, or when you visit. At Walker Chapel Historic Cemetery, we are honored to be entrusted with your cherished memories, and we pledge to serve you with the utmost care and reverence.

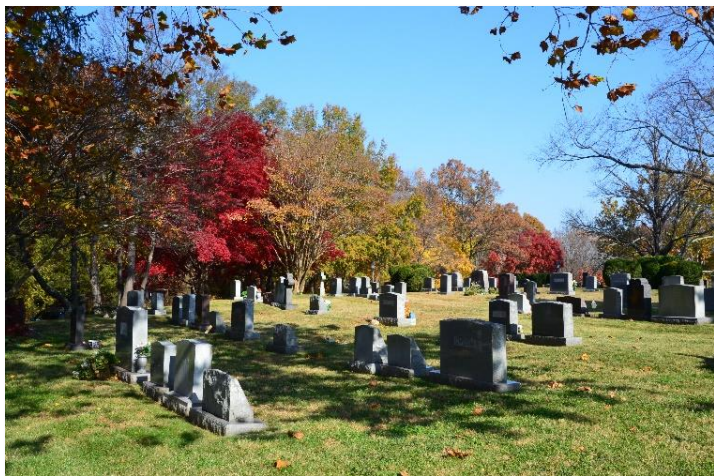


Please visit the Walker Chapel Historic Cemetery, a tranquil sanctuary steeped in rich Christian heritage. Here, amidst the solemn beauty of our grounds, we honor the memory of those who have gone before us with utmost reverence and dignity.

As stewards of this sacred space, we uphold a code of conduct that fosters a sense of reverence and respect. Visitors are kindly reminded to observe a solemn demeanor. Our serene grounds are dedicated to the peaceful rest of the departed, and we ask that all who enter through these gates do so with the utmost respect for their memory.



While our cemetery is a place of quiet contemplation, it also serves as a gathering space for expressions of faith and community. Families are welcome to participate in our annual Easter Egg hunt, celebrating the joy of the season amidst the tranquil beauty of nature.



We kindly request that all activities within the cemetery grounds align with our mission of reverence and respect. This includes adhering to guidelines regarding interment practices, visiting hours, and vehicle access.

Our commitment to maintaining the sanctity of this hallowed ground is unwavering, ensuring that future generations may also find solace within its sacred confines.



At Walker Chapel Historic Cemetery, we honor the past while embracing the future, guided by the timeless principles of faith and respect. We invite you to join us in preserving the sanctity of this cherished space, as we continue to uphold the sacred legacy of those who rest here.

As you consider honoring your loved ones within our sacred grounds, allow us to outline the principles that shape our shared experience:

**Eligibility:** The Cemetery is reserved for members of Walker Chapel and deceased individuals with a familial connection with the ROI Licensee. The eligibility to acquire an ROI License is provisional during the first year of membership during which active involvement in the Chapel and a commitment to tithing are required to obtain a license.



**Right of Interment/Inurnment (ROI) License:** Each Gravesite is licensed through a ROI License, symbolizing a commitment to honor and cherish the memory of those who are buried here. While not conferring ownership, this license ensures a legacy for you and your extended family.

**License Limitations:** No more than six gravesites will be licensed to one family generational unit. Additional licenses may be acquired by subsequent generations, maintaining a balance between tradition and availability.

**Expiration and Transfers:** ROI Licenses will self-expire after fifty years if unused. Transfers of sites to third parties are not permitted, with options for site return to Walker Chapel as a donation or refunding the original license fee.

**Cremains Scattering:** Cremains or Ashes must be interred, and scattering is not permitted, maintaining the integrity of the garden as a place of quiet reflection.

**Guided by Pastoral Care:** Our Pastor oversees all aspects of memorial services, ensuring each ceremony reflects the values of compassion and dignity.

**Graveside Services:** A graveside service is a mandatory an expected part of our process, providing a sacred space for families to gather, reflect, and bid farewell. The Service may be as simple as a gathering of family with Chapel staff sharing memories to a faithful gathering of friends and family lead by clergy.

**Commitment to Excellence:** From service arrangements to event coordination, our team stands ready to assist you every step of the way, ensuring a seamless experience during a challenging time.

**Financial Transparency:** We uphold financial integrity by settling all fees before the commencement of graveside services, ensuring clarity and peace of mind for families.

**Ground Restoration:** Within two weeks of interment, Cemetery Staff will restore the natural state of the grounds around the gravesite. This service is included as part of the cemetery fee.

**Interment:** A single gravesite may accommodate two casketed burials, either one over the other, or up to six cremains interments. Double-depth interments may incur additional license fees determined by the Walker Chapel Leadership Board.

**Vault Requirement:** All casketed and urn interments necessitate a vault provided by the Cemetery, with opening and closing services performed by the Cemetery's designated vendor.

**Funeral Home Coordination:** Casketed ground burials must be arranged and overseen by a funeral home licensed by the Department of Professional and Occupational Regulation (DPOR) of the State of Virginia. The Funeral Director must be present throughout the process.

**Headstone and Marker Guidelines:** All interments in the main cemetery must be marked with a proper headstone, footstone, or marker pre-approved by the Chapel Cemetery. Headstones must be placed a minimum of six inches inside the gravesite(s) property line as determined by the Cemetery manager. The balance with the space may be the width of the headstone. They must not exceed 10 inches in thickness or be more than three feet two inches in total height measured at the tallest point including the base. The stone material and color must be compatible with what is already in the cemetery and befitting the sacred and historic place it represents. The shape of the headstone must be consistent with nearby headstones. Towers, mausoleums, full site stone slabs, obelisks, or unusual shaping of the stone are not allowed. These items are owned by the family and should be insured via a household insurance policy.

**Lot Markers:** Only lot markers are permitted, and the licensee must be the licensee of all gravesites in the lot. The markers must be no larger than four inches square, may only be engraved with the first initial of the last name of the family and be ten to twelve inches in height. The markers must be buried inside the lot boundaries and be level with the surrounding ground.

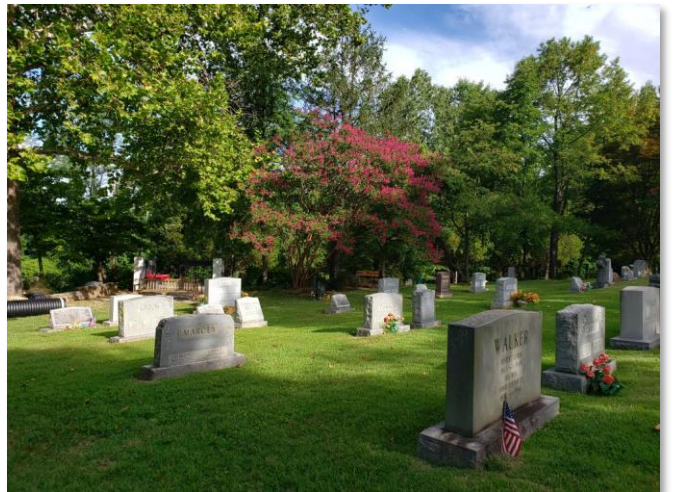
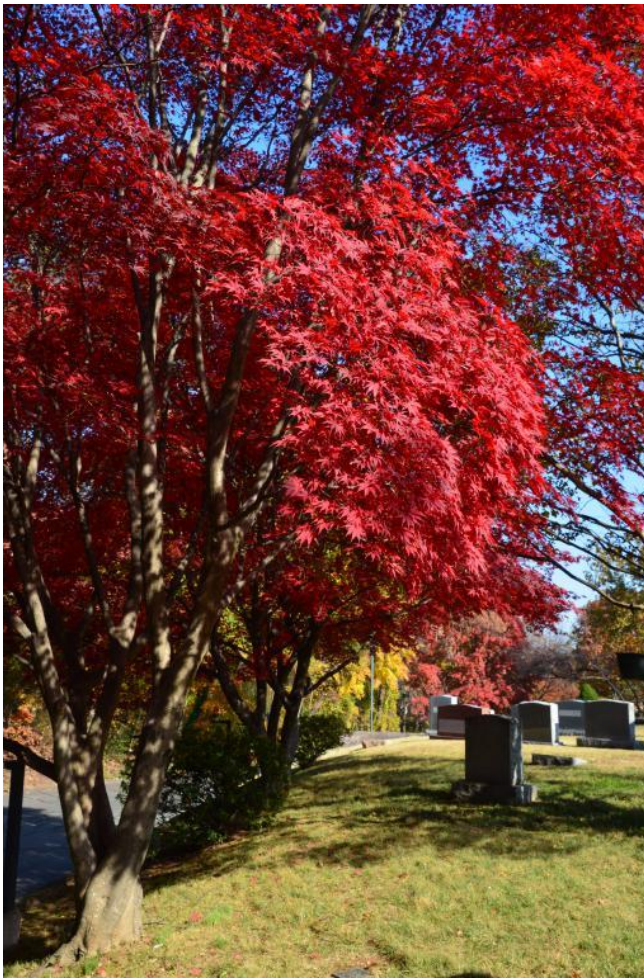
**Flat Headstones, Footstones, and Memorials:** Many gravesites have flat stones sunk in the ground. Historically there were head stones and foot stones to mark the top and bottom of the grave. Now they are more memorials or markers for cremains interments. These memorials are limited to flat stones not larger than twenty-four by twelve inches and four to six inches deep. The engraving and/or images on the memorial must be pre-approved by the Cemetery Manager as with any stone. The stone must be laid on a concrete base 3 inches larger than the stone on each side and a minimum of 12" thick when laid on undisturbed earth.

**Decorations Considerations:** Decorations include the placement of any materials in or upon any gravesite that is other than a memorial. While flowers and small objects are permitted near gravesites, it is essential to acknowledge the open nature of the garden, where items may be exposed to natural elements and wildlife. Examples are artificial or real flowers, plants, shrubs, trees, toys, remembrance items, and photographs. At the discretion of the Cemetery manager, live plantings and artificial flowers are permitted around a gravesite but may be removed without notice by the Cemetery grounds crew if they present a problem with grounds care. No enclosures of any nature such as fences, hedges or ditches will be allowed around any gravesites or lot. Grave mounds are strictly prohibited and no site or memorial or markers will be raised above the established grade. The Cemetery manager has the authority to prune, remove or transplant any plant, bush, flower or tree when in manager's sole opinion such a course is necessary.



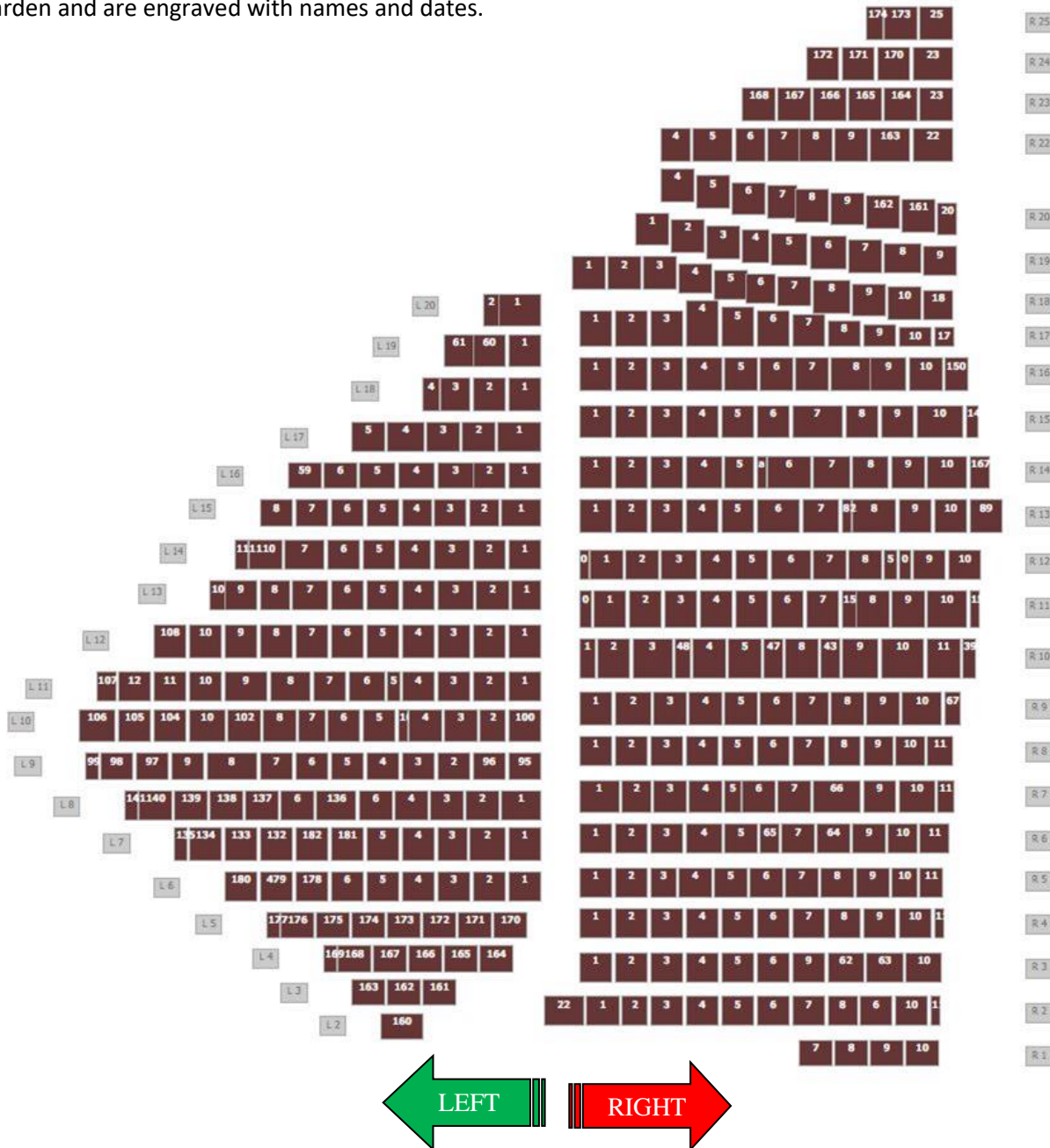
**Preservation of Sacred Space:** We maintain the sanctity of our grounds by prohibiting scattering of cremains in or around the Memorial Garden, thus safeguarding its tranquility.

As you embark on this journey with us, know that Walker Chapel's Historic Cemetery is a sanctuary of remembrance, where every detail is crafted with care and reverence. Welcome to our community, where love and legacy endure.



*The Cemetery*  
*at Walker Chapel Historic Cemetery*

The Cemetery embraces simplicity and reverence, offering individual and companion gravesites, with a forest of trees and green lawns leading up to the site of the first Walker Chapel United Methodist Church and the original Walker Family Burial Ground. The cemetery is licensed only to members of the Chapel. It is a private, sacred location for memories and visitation. The grave stones are spaced evenly across the surface of the garden and are engraved with names and dates.



Typical designation: MR04-005-1SD

For **M**ain Cemetery, **R**ight Side, Row **5**, Lot **1**, **S**ingle Depth



The process begins when the family first meets with the cemetery staff to view the cemetery and select the location for their family. Once an application or an ROI License has been received, the Cemetery staff will meet with the primary contact for the license to confirm the selection and license details. An invoice for the ROI License is then prepared by the Cemetery and upon payment, the ROI License is issued granting the right to inter their loved ones in this sacred space.

Upon passing to eternal care, the cemetery will be notified by the Walker Chapel office. The cemetery will arrange all interment services, the Burial Certificate, and other records in coordination with the Chapel Office and the Family.

The Walker Chapel office will notify the Cemetery and arrange the date, time, and service plans for the graveside Service including military honors if applicable.

As you embark on this journey with us, know that Walker Chapel's Historic Cemetery is more than a final resting place—it is a sanctuary of remembrance, where every detail is crafted with care and reverence.

Item	Description	Fee Range
One Gravesite	May be used for single or single & double depth graves or up to six cremains interments. Walker Chapel members only.	\$8,000.00
Interment Service	Includes grave open/close and single vault placed at the selected depth. Service fees range from simple family gatherings to larger services with chairs, canopy, ground cover, tables, and lowering devices.	\$5,000.00 to \$9,000.00
Burial License	A Cemetery Burial License documents the funeral home, service providers, and cemetery staff for one memorial and is recorded together with a family provided Death Certificate and optionally with a Certificate of Cremation.	\$950.00
Cemetery Fee	The administrative fee to the cemetery for coordinating one interment and recording it in the records of Walker Chapel, and to fund the eternal care of the grounds.	Cremains: \$1,500.00 Casketed: \$2,500.00
Quit Claim	If the site is returned to the Chapel unused, the original license fee is returned less the Quit Claim processing fee.	\$750.00





## Funding and Stewardship

The upkeep of our cemetery is made possible through the generous support of donors and the stewardship of our Trustees:

- † **Perpetual Care Fund:** Established from bequests and donations, the Chapel Trustees and Treasurer manage the fund to ensure ongoing maintenance and upkeep from the return on investment of the fund.
- † **Donations and Gifts:** Contributions to the cemetery, whether designated or general, play a vital role in preserving its sacred legacy. Gifts to the cemetery may be for general use or be designated for a specific application. The wishes of the donor will be followed in all cases.

The Leadership Board and the Trustees of the Chapel appoint the Cemetery manager to oversee the day-to-day operation of the Cemetery. The Cemetery manager and all cemetery staff are volunteers and do not receive any compensation for their work.

## Stay Connected

Communication is key to preserving the legacy of those laid to rest in our cemetery:

- † **Annual Contact:** Each January, the Cemetery Manager reaches out to license holders to validate contact information, ensuring ongoing connection and care.
- † **Reach Out:** For inquiries or assistance, contact us via email at [cemetery@walkerchapel.org](mailto:cemetery@walkerchapel.org) or by phone at 703-538-5200.

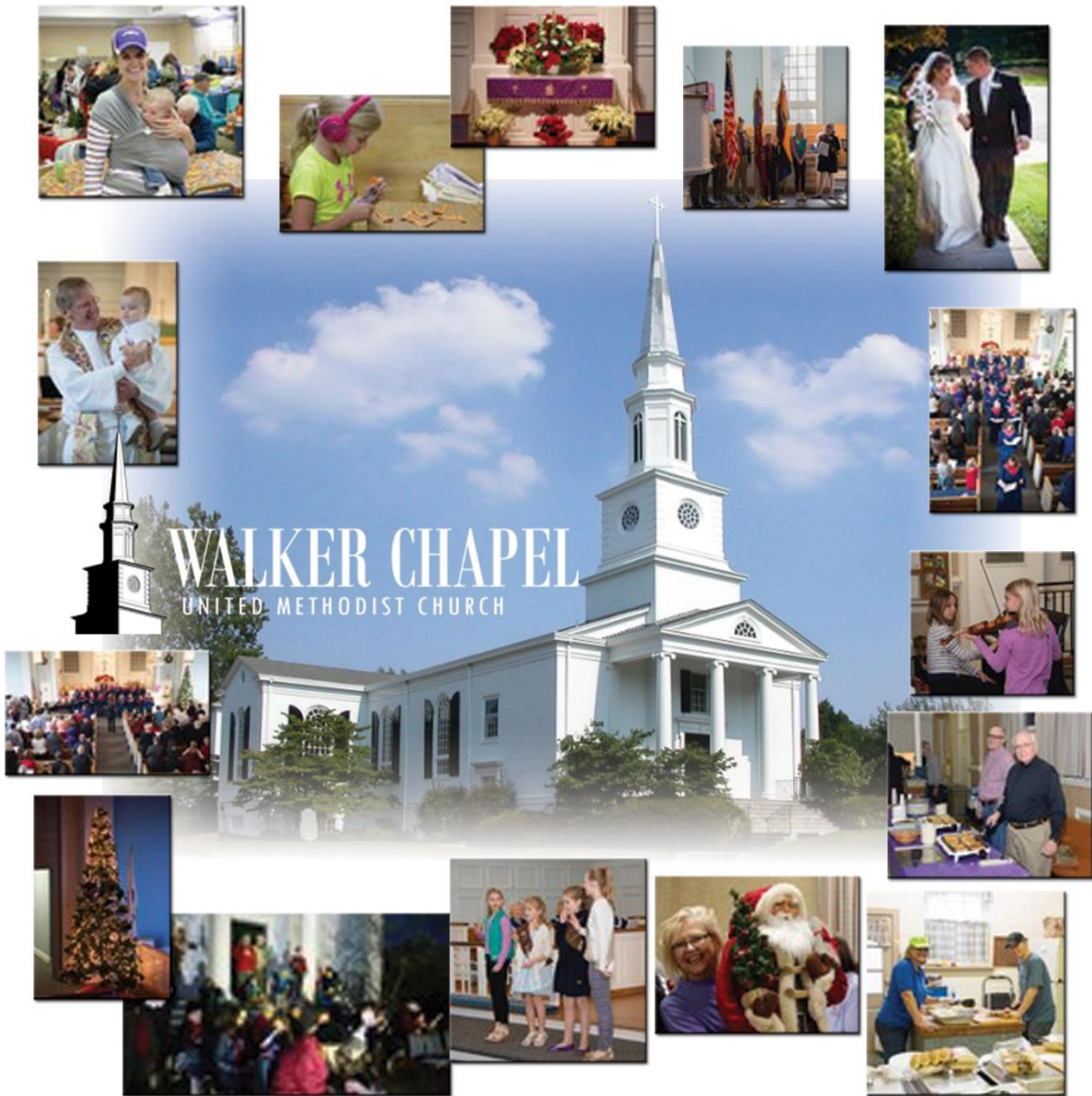
Contact us by email to [cemetery@walkerchapel.org](mailto:cemetery@walkerchapel.org)

Or phone the Chapel Office at 703-538-5200

For more information, pictures, and details, you are invited to click the link below to visit the chapel cemetery website at:

[www.chapelcemetery.org](http://www.chapelcemetery.org)

Thank you for considering Walker Chapel Historic Cemetery as the final resting place for your loved ones. We understand the importance of this decision and vow to support you every step of the way. In the quiet embrace of our sacred grounds, may you find solace, peace, and the eternal presence of cherished memories.



**WALKER CHAPEL**  
UNITED METHODIST CHURCH

*“Those who wait for the Lord shall renew their strength,  
they shall mount up with wings like eagles,  
they shall run and not be weary,  
they shall walk and not faint.”*

Isaiah 40:31